

Improved  
closure!

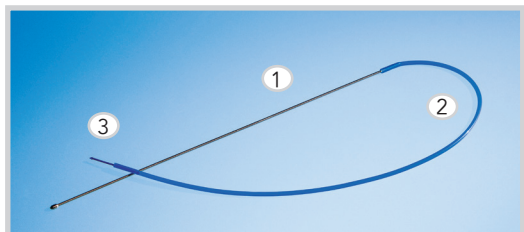
## Long-term drainage for anal fistulas

- The **first** drainage of its kind with no knots
- The **first** medical device approved specifically for this purpose
- The **first** choice for maximum patient comfort

# Comfort Drain

## Convincingly simple

The Comfort Drain is extremely simple to use. Containing a flexible probe, silicone drain and unique closure, the sterile set is delivered fully pre-assembled and makes the surgeon's work in the OR not only easier, but also more efficient. In particular the simple closing mechanism, which needs no knots or additional suture material, makes a very noticeable difference: In this case, less is definitely more.



## Simply convincing

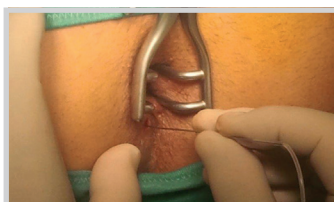
Not only are surgeons convinced by its comfort, but patients as well. For patients, long-term drainage of anal fistulas can represent a considerable impairment to everyday life. The average adult spends 11.5 hours of each day in a sitting position, and this is where the Comfort Drain really comes into its own: thanks to the miniaturization of the drainage system and the absence of extra sutures and knots, patients enjoy less skin irritation and a heightened level of comfort, especially when seated.

The Comfort Drain consists of 3 components:

1) Metal probe 2) Silicone drain 3) Polypropylene closure

Intended for the treatment of inter-, trans-, and suprasphincteric fistulas, the Comfort Drain is the first medical device approved specifically for these applications. The soft silicone drain is positioned with the probe, and the two ends are then joined to form a closed ring. This serves to promote fibrosis in the fistula tract, providing a safe means of preparation for subsequent fistula surgery. Long-term drainage plays a very important role in the treatment of Crohn's fistulas, for which the Comfort Drain is ideally suited.

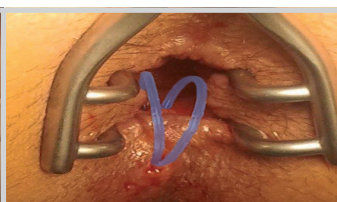
**Example:** Implantation of the Comfort Drain and removal after 8 weeks



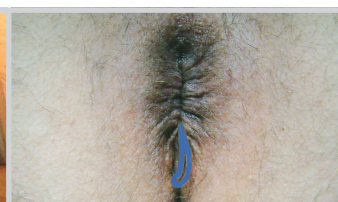
Locating the fistula tract with the probe



Knot-free closure of the Comfort Drain



Two Comfort Drains in place



Site showing no abnormalities eight weeks later, immediately prior to fistula surgery

### Comfort Drain at a glance:

- First medical device approved for this purpose
- Fully-closed ring: the first knot-free drain
- Less inflammatory skin irritation during preparation for fistula surgery
- Greatly increased comfort for the patient

Order Code	Product	Technical Details
CDS2001	<b>Comfort Drain</b> Long-term drainage for treatment of anal fistulas	Set consists of silicone drain with polypropylene closure and metal probe  Delivered sterile 10 units / box
CDS2010	<b>Comfort Drain Grasper</b> Facilitates the closure of the Comfort Drain	Delivered non sterile 1 unit

### A.M.I. Headquarters:

A.M.I. GmbH  
Im Letten 1  
6800 Feldkirch  
Austria  
t +43 5522 90505-0  
f +43 5522 90505-4006  
e info@ami.at  
www.ami.healthcare

These products comply with the requirements of Medical Device Directive 93/42/EEC and are labelled with the CE mark accordingly.

CE0297 CDS2001  
CE CDS2010



**A.M.I.**<sup>®</sup>